

## DEBT MANAGEMENT LOANS

as low as **5.95%**\*



- Manageable interest rates — much lower than typical credit card rates of 9%–28%
- Various loan options available

Our staff can help find the solution that's best for you  
Drop by either branch or give us a call at 204.944.1033

\* Variable rate | On approved credit | Some restrictions may apply | Subject to change | Applies to new funds advanced

*Save the date!*  
**MEMBER APPRECIATION DAY**  
*Friday, June 8*

### Designation Notice

### Attention members with RSPs, RIFs & TFSAs

*Your designation of beneficiary by means of a designation form will not be revoked or changed automatically by any future marriage or divorce. Should you wish to change your beneficiary in the event of future marriage or divorce you will have to do so by means of new designation.*

## WE'LL BE CLOSED FOR EASTER

WPCU will be closed Good Friday, March 30 and Easter Monday, April 2

**YOU SERVE THE COMMUNITY.  
WE SERVE YOU.**



**WINNIPEG POLICE CREDIT UNION**

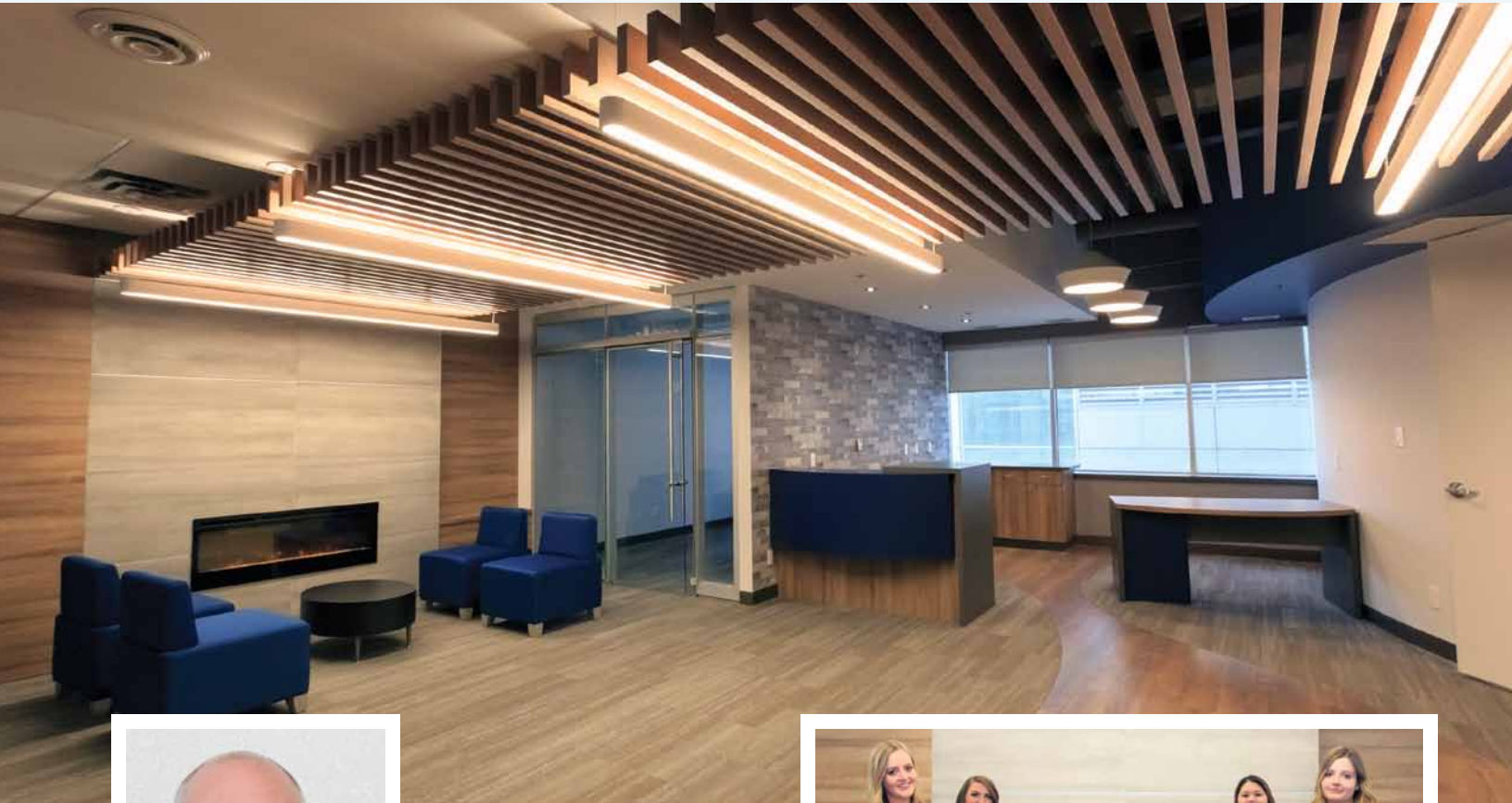
■ **Main Branch** 300 William Avenue | Winnipeg MB R3A 1P9 | Monday – Friday, 9 AM – 5 PM

■ **HQ Location** 230-266 Graham Avenue (Skywalk) | Winnipeg MB R3C 0J8 | Monday – Friday, 9:30 AM – 5:30 PM

**Member Services** 204.944.1033 | Loans Dept. 204.946.0551 | Fax 204.949.0821 | info@wpcu.ca | WPCU.CA 



# New HQ Location Open March 5



**“We could not be more excited about our new HQ Branch.**

*After 69 years, WPCU will be opening a second location. This new branch is forward-thinking in its design and, while it is minimal in square footage, it will offer full banking services — from cash transactions to investments, including mutual funds, as well as both personal and commercial lending. All of us at WPCU look forward to the opportunity to continue to serve all your banking needs and hope that you enjoy this new location.”*

— Cal Berzuk, CEO



**Meet your staff**  
Laurissa, Quinn, Pamela and Kerri

Winnipeg Police Credit Union  
**HQ Location**

230-266 Graham Avenue  
in the skywalk near Subway

Open Monday–Friday 9:30 am–5:30 pm

Offering lending and financial planning  
and an extended hours ATM

Tel 204.944.1033



## MEMBER REFERRAL PROGRAM



**YOU COULD WIN \$250!**

### Do a friend or family member a favour

WPCU members are welcome to refer their family, friends and neighbours to join our credit union, and enjoy the competitive rates and superior service that have made our members among the most satisfied in Manitoba.

And... as thanks, every member who makes a referral will be entered into a quarterly draw to win \$250.00!\*

\* A signed referral form must be on file in order for the referring member to qualify for the draw.

Winners will be asked to receive their prize in person and have their photo published online and in our newsletter.

### Staff Notes ▾

*A warm welcome to WPCU's new Consumer & Mortgage Lenders!*

**Zaila** has 27 years of experience in the credit union system, 25 of those in lending and financial advice. She loves spending time with her children, Andrew and Samia, and her dog Chico. Zaila loves to read, both fiction and non-fiction, and also enjoys yoga and meditation.



**Quinn** has worked in the credit union system for over 5 years. She has a Bachelor of Business Management from Athabasca University, and is (mildly) obsessed with her golden retriever puppy, Finn. Quinn loves to play volleyball, ringette, and baseball and is an avid hockey and football fan.



*AND... congratulations to **Rachel**, our new Member Service Co-ordinator, and to **Diane**, who has taken over as Digital Marketing and Member Communications Officer.*

*Congratulations and warm wishes to **Joan**, who retired in December, and also to **Cheryl**. Thank you for your time with us at WPCU. We wish you well in all your future endeavors!*

WINNIPEG POLICE  
VETERANS  
ASSOCIATION

# Spring Fling

**FRIDAY, APRIL 20**

**CANAD INNS POLO PARK** Ambassador Room

**COCKTAILS 6:00 PM**

**DINNER 7:00 PM**

**PRIZES! MONEY TREE! MUSIC BY AIME'S MUSIC SERVICES**

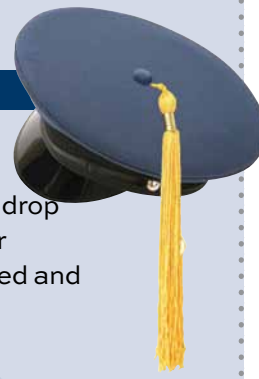
**Tickets \$40.00** Available at WPCU or from any Director • On sale in March — purchase by April 16

To book your table (8 or 10), and for vegetarian/gluten-free meals, contact **Maureen Silk** (mtsilk@shaw.ca or 204.667.3630)

*As per a change to WPVA constitution at the 2017 AGM, only one (1) complimentary ticket will be provided to lifetime members (age 75 years and up) and widows*

## BRAIN-TEASING CONTEST

# WIN



## Read your Newsletter and

Just answer these questions from this month's newsletter — then drop off your entry at the credit union, send it by fax to 204-949-0821 or **enter online** ([wpcu.ca](http://wpcu.ca) > Newsletter Contest). If your ballot is picked and your answers are all correct, **we'll deposit \$100 into your account!**

Our next contest draw date will be March 26, 2018. Good luck!

1) Music at this year's WPVA Spring Fling will be provided by:

- Eddie Money     The Police     Aime's Music Services

2) WPCU's new HQ Location can be found at 266 Graham:

- in the skywalk, near Subway     next door to the Chief's office  
 on the main floor, near the museum

3) WPCU members are welcome to refer their family, friends and neighbours to join our credit union, and enjoy:

- having their photo published online and in our fabulous newsletter  
 competitive rates and superior service     both

NAME

ADDRESS

TELEPHONE

MEMBER NUMBER

Congratulations to **Ronnel Pagsuyuin**, who won \$100 in our last newsletter contest

## Check our U.S. exchange rates online

WPCU's U.S. exchange rates, both buying and selling, are updated daily at [wpcu.ca](http://wpcu.ca)

If you need \$1,000 or more in U.S. currency, please call our branch, 24 hours in advance, at **204.944.1033**



## WPCU BULLETIN BOARD

**RE/MAX Performance Realty — Ken Brown** "Call Ken for a Free Market Evaluation."

All areas of the City of Winnipeg & surrounding rural areas.

Tel 204-255-4204 or 204-981-7603 [www.kenbrown.ca](http://www.kenbrown.ca) e-mail [ken@kenbrown.ca](mailto:ken@kenbrown.ca)

*Advertisements published in our newsletter will be subject to a fee of \$3 per line per month, to a maximum of three lines per advertisement. Fax your ad to 204-949-0821 or e-mail [info@wpcu.ca](mailto:info@wpcu.ca)*

*Space is limited and is available on a first-come, first-served basis. Ads must be renewed monthly.*

*We are not responsible for, nor do we endorse, the products and services sold in these ads.*

## WINNIPEG POLICE CREDIT UNION

Serving the financial needs of our members since 1949

### BOARD of DIRECTORS

#### PRESIDENT

Lawrence Klippenstein

#### VICE-PRESIDENT

Gordon Gold

#### SECRETARY

Maurice Sabourin

#### DIRECTORS

Adam Cheadle

Joe Gallagher

Ron Smolik

Fred Thomas

Cory Wiles

Andrew Zurawsky

### MEMBER SERVICE TEAM

#### CHIEF EXECUTIVE OFFICER

Cal Berzuk

#### MANAGER of LENDING SERVICES

Adeline Richardson

C.I.M., P. MGR., C. MGR.

#### MANAGER of BUSINESS DEVELOPMENT and WEALTH MANAGEMENT

Heather Kozubski

C.I.M., C. MGR., FCUIC

#### MANAGER of MEMBER SERVICES

Kimberly Caetano

#### FINANCIAL ADVISORS

Helder, Pamela

#### CONSUMER and MORTGAGE LENDERS

Zaila (Senior), Trevor,

Karen FCUIC, ACUIC

and Quinn

#### LOANS ADMINISTRATION OFFICER

Shaunna (Senior), Ingrid

#### LOANS ADMINISTRATOR

Irene

#### INTERNAL AUDIT & ADMINISTRATION OFFICER

Evelyne

#### DIGITAL MARKETING & MEMBER COMMUNICATIONS OFFICER

Diane

#### WEALTH MANAGEMENT ASSISTANT

Gloria

#### MEMBER SERVICE CO-ORDINATOR

Rachel

#### MEMBER SERVICE SUPERVISOR

Laurissa

#### MEMBER SERVICE REPRESENTATIVES

Jill, Joasia and Kerri